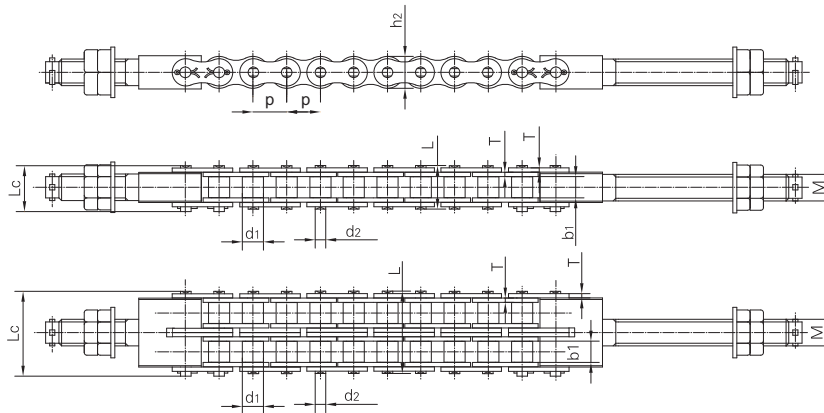


东风链号 Dongfeng Chain No.	节距 Pitch	销轴直径 Pin diameter	销轴长度 Width over bearing pins		链板高度 plates depth	链板厚度 Plate thickness	螺栓规格 Type of bolt	抗拉强度 Ultimate tensile strength	平均抗拉强度 Average tensile strength	每米重量 Mass per meter
			L max	Lc max						
	p	d2 max	L max	Lc max	h2 max	T max	M	Fu min	Fua	q ≈
	mm	mm	mm	mm	mm	mm	mm	kN	kN	kg/m
LTLL1266	19.05	5.72	26.3	29.0	16.13	1.90	M20	86.7	99.8	2.00
LTAL666	19.05	5.94	32.2	35.1	15.60	2.44	M20	114.0	131.0	2.60



东风链号 Dongfeng Chain No.	节距 Pitch	滚子直径 Roller diameter	内节内宽 Width between inner plates	销轴直径 Pin diameter	销轴长度 Width over bearing pins		内链板高度 Inner plates depth	链板厚度 Plate thickness	螺栓规格 Type of bolt	抗拉强度 Ultimate tensile strength	平均抗拉强度 Average tensile strength	每米重量 Mass per meter
					L max	Lc max						
	p	d1 max	b1 min	d2 max	L max	Lc max	h2 max	T max	M	Fu min	Fua	q ≈
	mm	mm	mm	mm	mm	mm	mm	mm	mm	kN	kN	kg/m
LT80-1	25.40	15.88	15.75	7.92	32.7	36.5	24.0	3.25	M16/M20	71.55	81.8	2.60
LT80-2	25.40	15.88	15.75	7.92	62.7	65.8	24.0	3.25	M20	143.10	163.6	5.15
LT100-1	31.75	19.05	18.90	9.53	40.4	44.7	30.0	4.00	M24	107.85	118.6	3.91
LT100-2	31.75	19.05	18.90	9.53	76.4	80.5	30.0	4.00	M24	215.70	234.4	7.80
LT100-3	31.75	19.05	18.90	9.53	112.2	116.3	30.0	4.00	M24	323.55	351.6	11.77
LT120-1	38.10	22.23	25.22	11.10	50.3	54.3	35.7	4.80	M30	149.20	161.1	5.62
LT120-2	38.10	22.23	25.22	11.10	95.8	99.7	35.7	4.80	M30	298.40	322.2	11.20