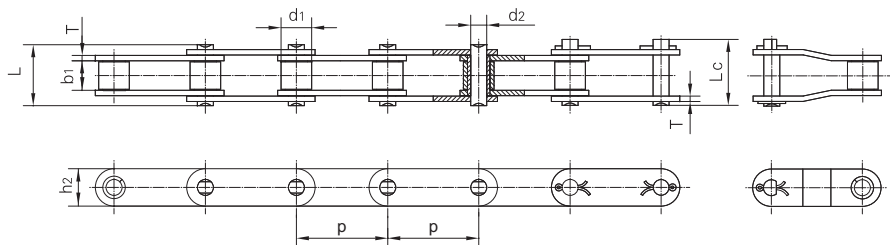
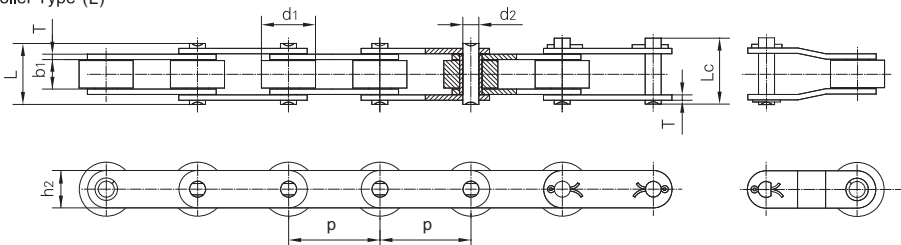


小滚子型 Small Roller Type



大滚子型 Large Roller Type (L)



链号 Chain No.		节距 Pitch	滚子 直径 Roller diameter	内节 内宽 Width between inner plates	销轴 直径 Pin diameter	销轴 长度 Width over bearing pins	连接销 轴长度 Width over connecting pins	链板 高度 Inner plates depth	链板 厚度 Plate thickness	抗拉 强度 Ultimate tensile strength	每米 重量 Mass per meter
GB ISO DIN	ANSI	P	d1 max	b1 min	d2 max	L max	Lc max	h2 max	T	min	q ≈
		mm	mm	mm	mm	mm	mm	mm	mm	kN(lb)	kg/m
C208A	C2040	25.40	7.95	7.85	3.98	17.80	21.70	12.07	1.52	13.90	0.50
C208AL	C2042	25.40	15.88	7.85	3.98	17.80	21.70	12.07	1.52	13.90	0.84
C208B		25.40	8.51	7.75	4.45	17.00	20.90	11.81	1.60	17.80	0.55
C208BL		25.40	15.88	7.75	4.45	17.00	20.90	11.81	1.60	17.80	0.89
C210A	C2050	31.75	10.16	9.40	5.09	21.80	25.90	15.09	2.03	21.80	0.78
C210AL	C2052	31.75	19.05	9.40	5.09	21.80	25.90	15.09	2.03	21.80	1.27
C212A	C2060	38.10	11.91	12.57	5.96	26.90	31.50	18.10	2.39	31.30	1.12
C212AL	C2062	38.10	22.23	12.57	5.96	26.90	31.50	18.10	2.39	31.30	1.61
C212A-H	C2060H	38.10	11.91	12.57	5.96	30.20	34.80	18.10	3.18	31.30	1.44
C212AL-H	C2062H	38.10	22.23	12.57	5.96	30.20	34.80	18.10	3.18	31.30	2.07
C216A	C2080	50.80	15.88	15.75	7.94	33.50	38.90	24.13	3.18	55.60	2.08
C216AL	C2082	50.80	28.58	15.75	7.94	33.50	38.90	24.13	3.18	55.60	3.12
C216A-H	C2080H	50.80	15.88	15.75	7.94	37.40	42.80	24.13	3.96	55.60	2.54
C216AL-H	C2082H	50.80	28.58	15.75	7.94	37.40	42.80	24.13	3.96	55.60	3.58
C220A	C2100	63.50	19.05	18.90	9.54	41.10	47.20	30.17	3.96	87.00	3.01
C220AL	C2102	63.50	39.67	18.90	9.54	41.10	47.20	30.17	3.96	87.00	4.83
C220A-H	C2100H	63.50	19.05	18.90	9.54	44.50	50.60	30.17	4.75	87.00	3.56
C220AL-H	C2102H	63.50	39.67	18.90	9.54	44.50	50.60	30.17	4.75	87.00	5.38
C224A	C2120	76.20	22.23	25.22	11.11	50.80	57.40	36.20	4.75	125.00	4.66
C224AL	C2122	76.20	44.45	25.22	11.11	50.80	57.40	36.20	4.75	125.00	7.66
C224A-H	C2120H	76.20	22.23	25.22	11.11	55.00	61.60	36.20	5.56	125.00	5.26
C224AL-H	C2122H	76.20	44.45	25.22	11.11	55.00	61.60	36.20	5.56	125.00	8.26
C232A	C2160	101.60	28.58	31.55	14.29	65.50	73.40	48.26	6.35	222.4(50000)	8.15
C232AL	C2162	101.60	57.15	31.55	14.29	65.50	73.40	48.26	6.35	222.4(50000)	13.00
C232A-H	C2160H	101.60	28.58	31.55	14.29	69.40	77.30	48.26	7.14	222.40	9.06
C232AL-H	C2162H	101.60	57.15	31.55	14.29	69.40	77.30	48.26	7.14	222.40	13.84