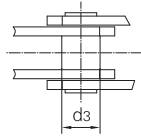
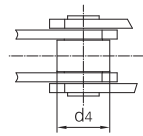


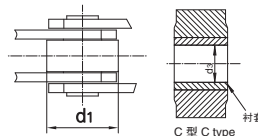
无滚子  
without rollers



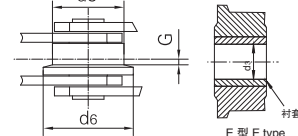
带A型小滚子  
with S small rollers



带B型和C型大滚子  
with B and C large rollers



带F型和E型带肩滚子  
with F and E flanged rollers



Chain 链号 No.	优选滚 子型式 Optimal	节距 Pitch							滚子直径 Roller dimension					套筒直径 Bush diameter
		P							d1 max	d4 max	d5 max	d6 max	G	d3 max
DIN	roller	mm	mm	mm	mm	mm	mm	mm	mm	mm	mm	mm	mm	mm
FV40	A	50	63	80	100	125			32	20	40	50	4	15.0
FV63	B	63	80	100	125	160			40	26	50	63	5	18.0
FV90	F	63	80	100	125	160	200	250	48	30	63	78	7	20.0
FV112	A	100	125	160	200	250			55	32	72	90	8	22.0
FV140	B	100	125	160	200	250			60	36	80	100	9	26.0
FV180	C	125	160	200	250	315			70	42	100	125	13	30.0
FV250	F	180	200	250	315	400			80	50	125	155	15	36.0
FV315	E	160	200	250	315	400			90	60	140	175	18	42.0

链号 Chain No.	内节内宽 Width between inner plates	销轴直径 Pin diameter	销轴长度 Pin length		链板高度 Plate depth	链板厚度 Plate thickness	抗拉强度 Ultimate tensile strength
DIN	b1 min	d2 max	L min	Lc max	h2 max	T	Fu min
	mm	mm	mm	mm	mm	mm	kN/lb
FV40	18.0	10.0	37.0	40.5	25.0	3.0	40.0/9091
FV63	22.0	12.0	46.0	50.5	30.0	4.0	63.0/14317
FV90	25.0	14.0	53.0	57.5	35.0	5.0	90.0/20453
FV112	30.0	16.0	63.0	67.5	40.0	6.0	112.0/25452
FV140	35.0	18.0	68.0	74.0	45.0	6.0	140.0/31815
FV180	45.0	20.0	86.0	93.0	50.0	8.0	180.0/40908
FV250	55.0	26.0	98.0	106.0	60.0	8.0	250.0/56817
FV315	65.0	30.0	117.0	125.0	70.0	10.0	315.0/71591