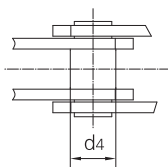
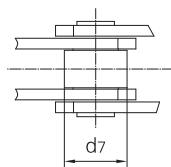


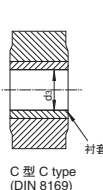
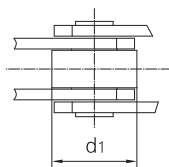
无滚子
without rollers



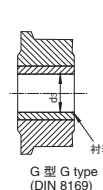
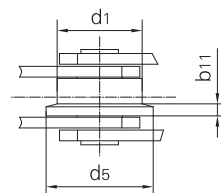
带S型小滚子
with S small rollers



带P型和C型大滚子
with P and C large rollers



带F型和G型带肩滚子
with F and G flanged rollers



链号 Chain No.	滚子 型式 Roller	节距 Pitch							滚子尺寸 Roller dimension			
		p							d1 max	d7 max	d5 max	b11
GB ISO DIN	type	mm	mm	mm	mm	mm	mm	mm	mm	mm	mm	mm
MC28	S、P、F	63	80	100	125	160			36	25	42	4.5
MC56		80	100	125	160	200	250		50	30	60	5.0
MC112	S、P、	100	125	160	200	250	315		70	42	85	7.0
MC224	C、F、G	100	160	200	250	315	400	500	100	60	120	10.0

链号 Chain No.	套筒直径 Bush diameter	链板高度 Plate depth	内节内宽 Width between inner plates	销轴直径 Pin diameter		销轴长度 Pin length		链板厚度 Plate thickness	抗拉强度 Ultimate tensile strength
GB ISO	d4 max	h2 max	b1 min	d2 max	d3 min	L max	Lc max	T max	Fu min
	mm	mm	mm	mm	mm	mm	mm	mm	kN/lb
MC28	17.5	26.0	20.0	13.0	8.2	42.0	47.0	3.5	28.0/6364
MC56	21.0	36.0	24.0	15.5	10.2	48.0	54.0	4.0	56.0/12727
MC112	29.0	51.0	32.0	22.0	14.3	67.0	73.0	6.0	112.0/25454
MC224	41.0	72.0	43.0	31.0	20.3	90.0	96.0	8.0	224.0/50909