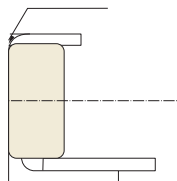


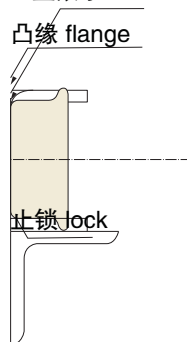
R 型滚子 R roller



滚子外径大于链板高度，所以链条可在导轨上滚动前进。R型滚子适用于运送大和重的物料。

Outside diameter of roller is larger than the height of the link plate, so the chain can roll on the guide rail. R Rollers are suitable for carrying large and heavy materials.

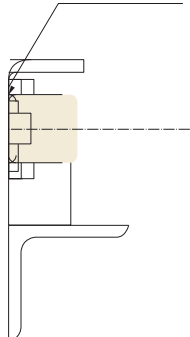
F 型滚子 F roller



F 型滚子用以实现把链条夹持在导轨间的功能。F 型滚子也是适用于运送大和重的物料。

Flanged rollers serve to retain the chain on the rails. F Roller are also suitable for carrying large and heavy materials.

S、M 和 N 型
S, M and N Roller



S、M 和 N 型滚子的外径都小于链板高度，其选用决定于应用场合。M 型滚子略小于 S 型滚子，而外径尺寸与 N 型滚子相同。N 型滚子的链条，其销轴直径比 M 型滚子的销轴略细。

The outside diameters of the S, M and N rollers are less than the height of the link plate and are specified depending on the application. The M Roller is a little larger than the S Roller, but the same size as the N Roller. For chains with the N Roller, the pin diameter is a little larger than that of the M Roller chain.

A 型附件

A Attachment

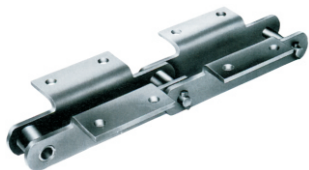


单侧折弯链板。A-1、A-2与A-3分别表示单孔、双孔和三孔。

A Attachment: bent type link plate on one side only. A-1, A-2, or A-3 indicates A Attachment with one, two or three holes, respectively.

K 型附件

K Attachment



双侧折弯链板。K-1、K-2 与 K-3 分别表示单孔、双孔和三孔。

K Attachment: bent type link plate on both side only. K-1, K-2, or K-3 indicates K Attachment with one, two or three holes, respectively.

SA 型附件

SA Attachment



单侧直立附件。 SA-1 与 SA-2 分别表示附件带单孔和双孔。

SA Attachment: straight attachment on one side only. SA-1, or SA-2 indicates SA Attachment with one or two holes, respectively.

SK 型附件

SK Attachment



双侧直立附件。SK-1与SK-2分别表示附件带单孔和双孔。

SK Attachment: straight attachment on both sides. SK-1, or SK-2 indicates SK Attachment with one or two holes, respectively.

G 型附件

G Attachment



带孔链板。G-2 与 G-4 分别表示 G 型附件带 2 孔和 4 孔。

G Attachment : Link plate with holes. G-2 or G-4 indicates G Attachment with two or four holes, respectively.

注：A、K、SA、SK和 G 型附件的尺寸，向生产厂具体咨询。

Note: The dimensions of A, K, SA, SK and G attachments may be advised from manufacturer.