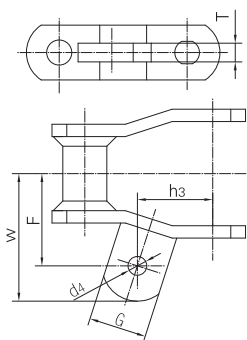


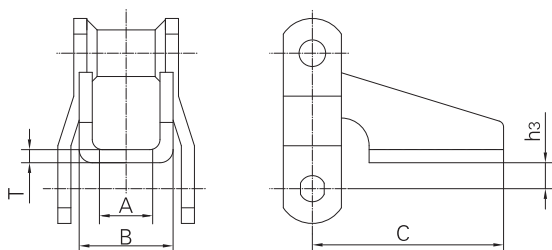
链号 Chain No.	L	G max	h <sub>3</sub>	F	W max	h <sub>4</sub> max	d <sub>4</sub>	T
	mm	mm	mm	mm	mm	mm	mm	mm
W78	28.4	52.3	38.9	101.6	130.0	22.4	9.7	6.4
W82	33.3	62.0	52.3	108.2	142.8	23.9	9.7	6.4
W110	44.4	84.1	98.6	135.2	168.2	30.0	9.7	9.7
W111	58.7	90.4	89.9	159.0	193.6	30.0	12.7	9.7
W124	49.3	77.7	71.4	133.6	180.8	30.0	9.7	9.7
W124H	49.3	80.8	73.2	133.6	165.6	39.6	12.7	12.7
W132	69.8	80.8	106.2	190.4	234.6	39.6	12.4	12.7

A22 附件 A22 attachments



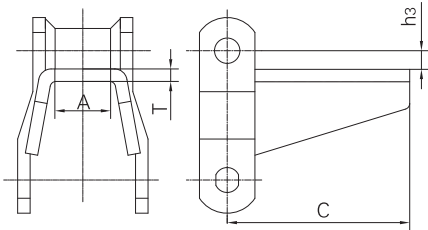
链号 Chain No.	H <sub>3</sub>	G max	F	W max	d <sub>4</sub>	T
	mm	mm	mm	mm	mm	mm
W78	33.30	30.0	47.8	65.0	9.7	9.7

H1 附件 H1 attachments



链号 Chain No.	h <sub>3</sub>	A min	B max	C max	d <sub>4</sub>
	mm	mm	mm	mm	mm
W78	12.7	22.4	50.8	93.5	6.4
W82	15.7	28.4	57.2	93.5	6.4

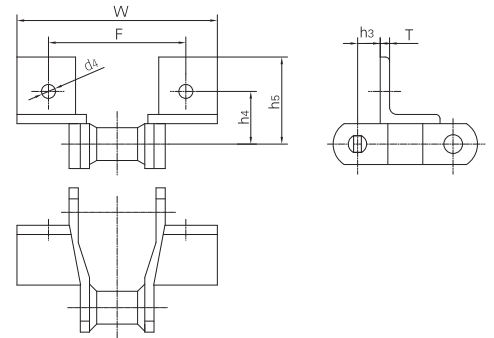
H2附件 H2 attachments



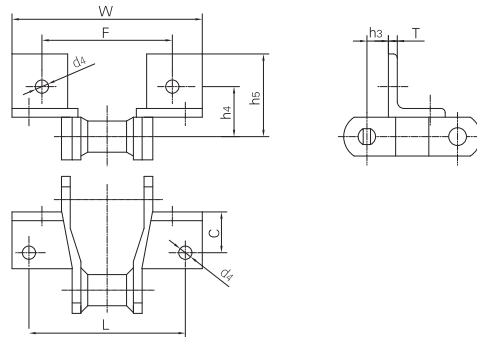
链号 Chain No.	h <sub>3</sub>	A min	C max	T
	mm	mm	mm	mm
W78	7.9	20.8	93.5	6.4
W82	7.9	26.4	96.8	6.4

带F2附件 F2 attachments

链号 Chain No.	h <sub>3</sub> max	h <sub>4</sub>	h <sub>5</sub> max	F	W max	d <sub>4</sub>	T
	mm	mm	mm	mm	mm	mm	mm
W78	15.7	36.6	60.5	95.6	138.2	9.7	6.4



带F4附件 F4 attachments

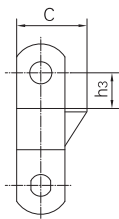
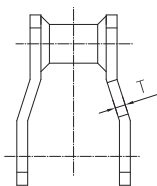


链号 Chain No.	h <sub>3</sub>	h <sub>4</sub>	h <sub>5</sub> max	L	C	F	W max	d <sub>4</sub>	T
	mm	mm	mm	mm	mm	mm	mm	mm	mm
W78	17.3	44.4	60.5	114.3	31.8	95.2	141.2	9.7	6.4
W82	20.6	46.2	62.5	127.0	28.4	104.6	150.9	9.7	6.4
W124	22.4	52.3	73.2	133.6	36.6	111.3	157.0	9.7	9.7

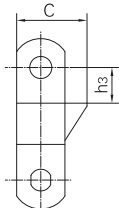
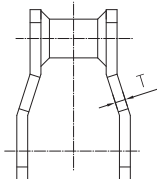
R1 & RR1 附件

R1 & RR1 attachments

R1



RR1

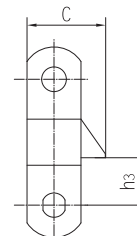
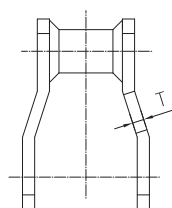


链号 Chain No.	h <sub>3</sub>	C max	T
	mm	mm	mm
W78	17.3	41.1	6.4
W82	22.4	49.3	6.4
W124	31.8	49.3	9.7

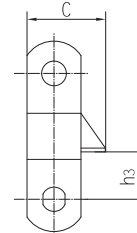
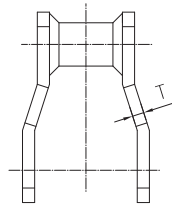
R2 & RR2 附件

R2 & RR2 attachments

R2



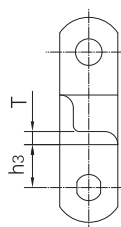
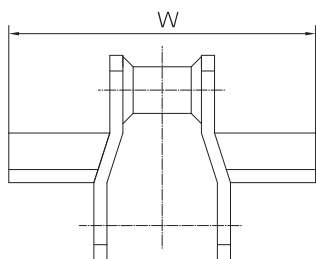
RR2



链号 Chain No.	h <sub>3</sub>	C max	T
	mm	mm	mm
W78	17.3	41.1	6.4
W82	22.4	49.3	6.4
W124	31.8	49.3	9.7

W1 附件

W1 attachments



链号 Chain No.	h <sub>3</sub>	W max	T
	mm	mm	mm
W78	19.1	153.9	6.4
W82	23.9	166.6	6.4
W124	30.0	217.4	6.4
W124H	35.1	217.4	9.7
W132	38.1	316.0	9.7