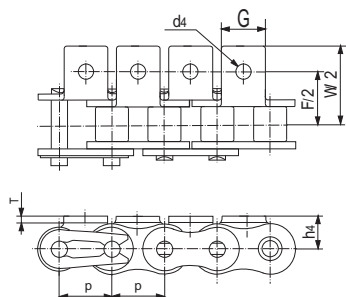
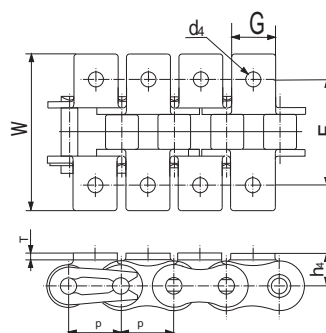


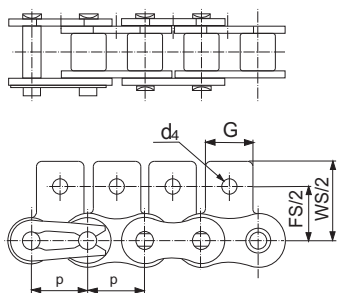
A-1



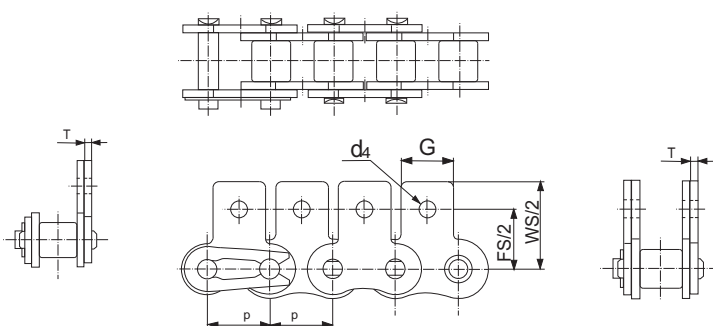
K-1



SA-1

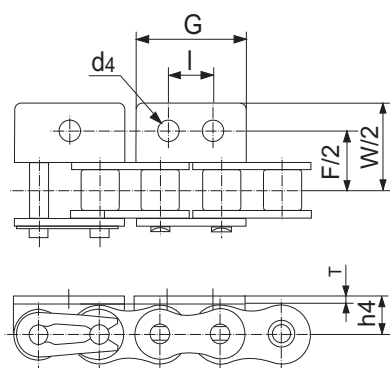


SK-1



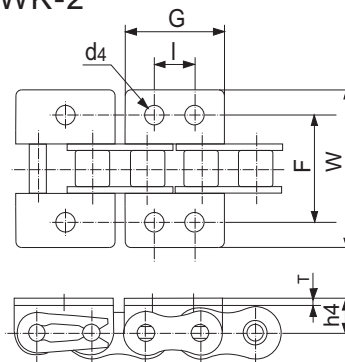
WA-1

WA-2



WK-1

WK-2



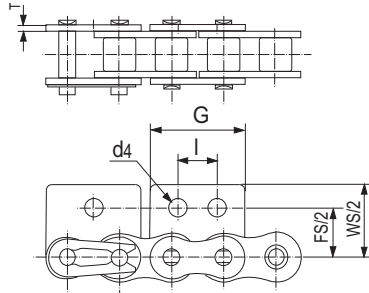
说明:

1、A表示单侧，K表示双侧，S表示直立，W表示加宽，AA表示上下单侧，Kk表示上下双侧；横划后数字:0表示无孔(无图例)，1表示单孔，2表示双孔。

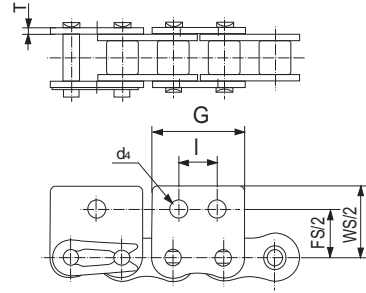
2、所列附件，均可用于内、外链节，定货时应专门明示，并说明附件排布(attachment spacing)。

3、本页和下页所示的附件分类及表记方法，已被国内外诸多用户和生产厂商采用，但与现行的ISO和各国标准不完全一致，请用户注意。

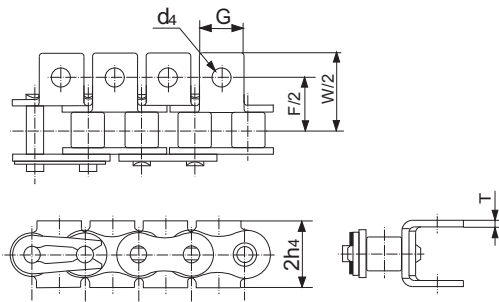
WSA-1 WSA-2



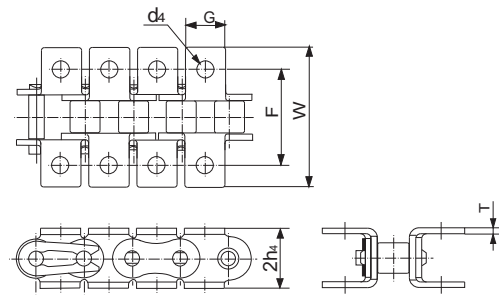
WSK-1 WSK-2



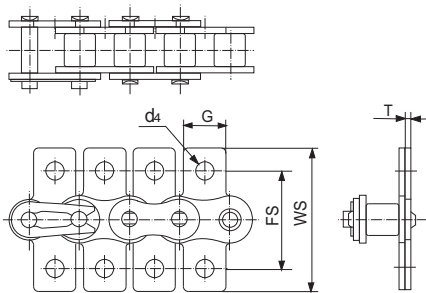
AA-1



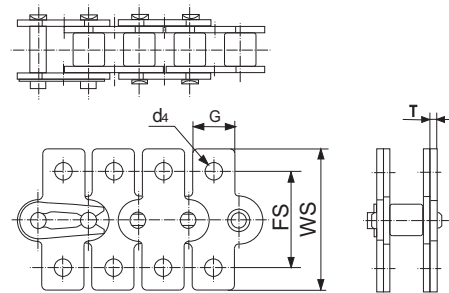
KK-1



SAA-1



SKK-1



X Y

